

Unequal Colleges in the Age of Disparity*

Charles T. Clotfelter

(*Based on *Unequal Colleges in the Age of Disparity*, Harvard University Press, 2017)



I'll cover:

Data

Students' scholarly readiness

Resources

Socioeconomic status/Family income

Diversity



Data





17 Categories of Colleges

SAT percentile in 1970 Illustrative example

Private Colleges and Universities

0-25	Iowa Wesleyan
25-50	Gonzaga University
50-60	Ohio Northern University
60-70	Texas Christian University
70-80	University of the Pacific
80-85	Lewis & Clark College
85-90	Tulane University
90-95	Colorado College
95-98	Northwestern University
98-99	Weslyan University
99+	Amherst College

Public Colleges and Universities

0-50	University of South Carolina
50-80	University of Michigan-Flint
80-90	University of North Carolina Chapel Hill
90+	Stony Brook University

Historically Black Colleges and Universities (HBCUs)

Private	Howard University
Public	Winston-Salem State University

Share of all 4-year college students, 2013		
		5.3
		5.1
		3.0
		3.1
		2.7
		1.1
		1.7
		2.4
		1.5
		1.0
		0.8
		37.9
		20.0
		7.1
		4.0
		0.9
		2.3
		100.0



Sample of 188 Colleges Using Freshman Survey

Type and 1970 SAT	Example	Number of colleges in sample	---Number of students-----		
			1972	1989 or 1990	2008 or 2009
Private colleges and universities					
0-25 pct	Iowa Wesleyan College	14	3,167	3,550	3,936
25-50 pct	Gonzaga University	24	6,052	5,567	9,171
50-60 pct	Ohio Northern University	10	7,065	6,823	8,601
60-70 pct	Texas Christian University	12	7,055	6,053	7,063
70-80 pct	University of the Pacific	19	8,327	9,239	10,517
80-85 pct	Lewis & Clark College	13	5,324	3,970	5,815
85-90 pct	Tulane University	8	3,392	3,733	4,470
90-95 pct	Colorado College	20	8,007	8,782	10,028
95-98 pct	Northwestern University	12	8,121	7,082	8,958
98-99 pct	Wesleyan University	9	4,441	4,889	4,052
99+ pct	Amherst College	9	3,534	3,596	2,544
Public colleges and universities					
0-50 pct	University of North Dakota	7	6,752	8,155	9,441
50-80 pct	University of Michigan-Flint	7	7,689	9,623	10,241
80-90 pct	UNC Chapel Hill	5	11,951	12,082	12,052
90+ pct	Stony Brook University	6	6,434	6,820	10,601
Historically Black Colleges and Universities					
Private	Howard University	8	2,307	3,230	3,077
Public	Winston-Salem State Univ.	5	1,833	1,947	2,342
Total		188	101,451	105,141	122,909

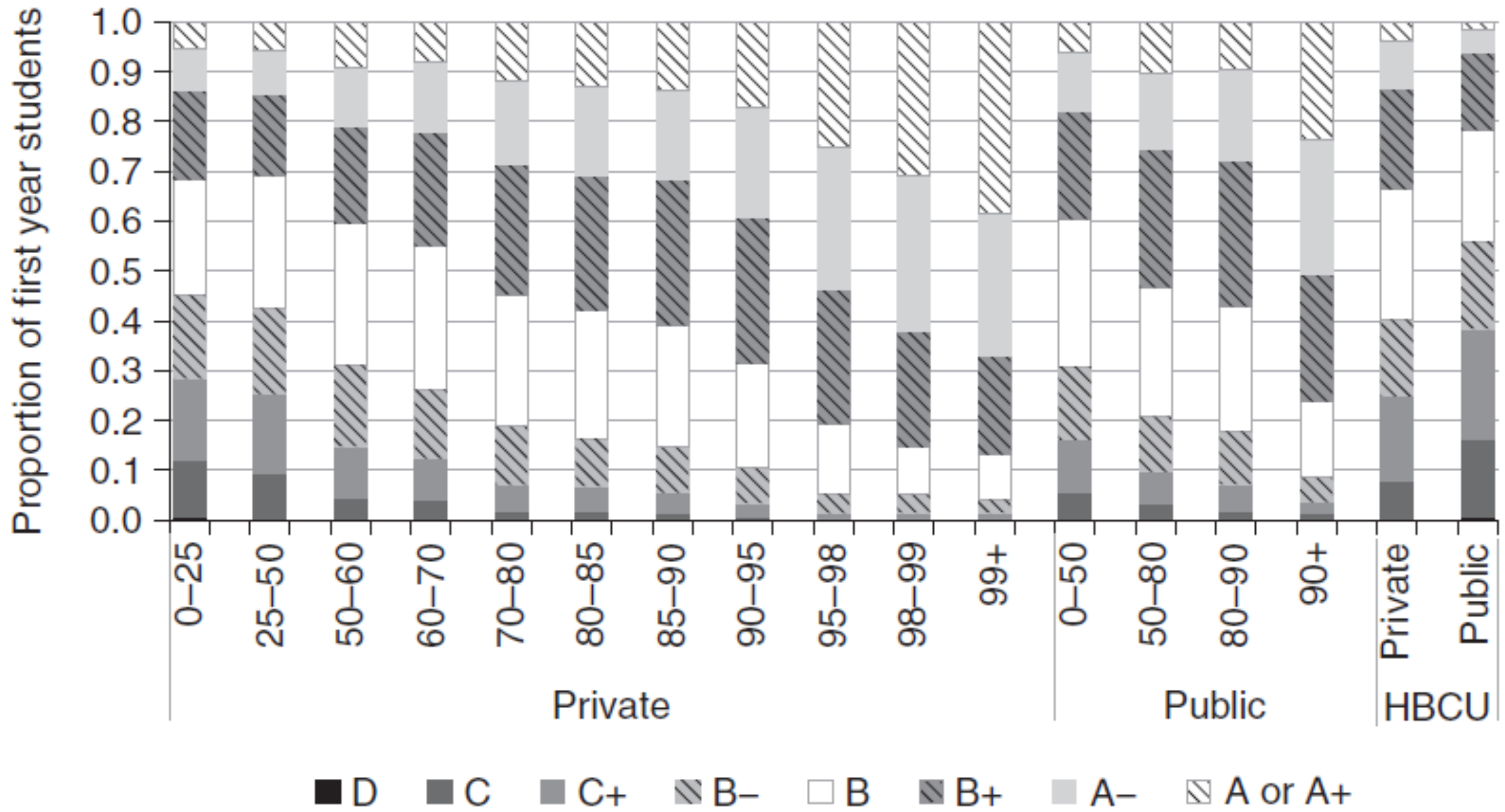
Source: HERI Freshman Survey, selected institutions. For each institution, data collected for 1972, either 1989 or 1990, and either 2008 or 2009. [C-19]



Students' Scholastic Readiness



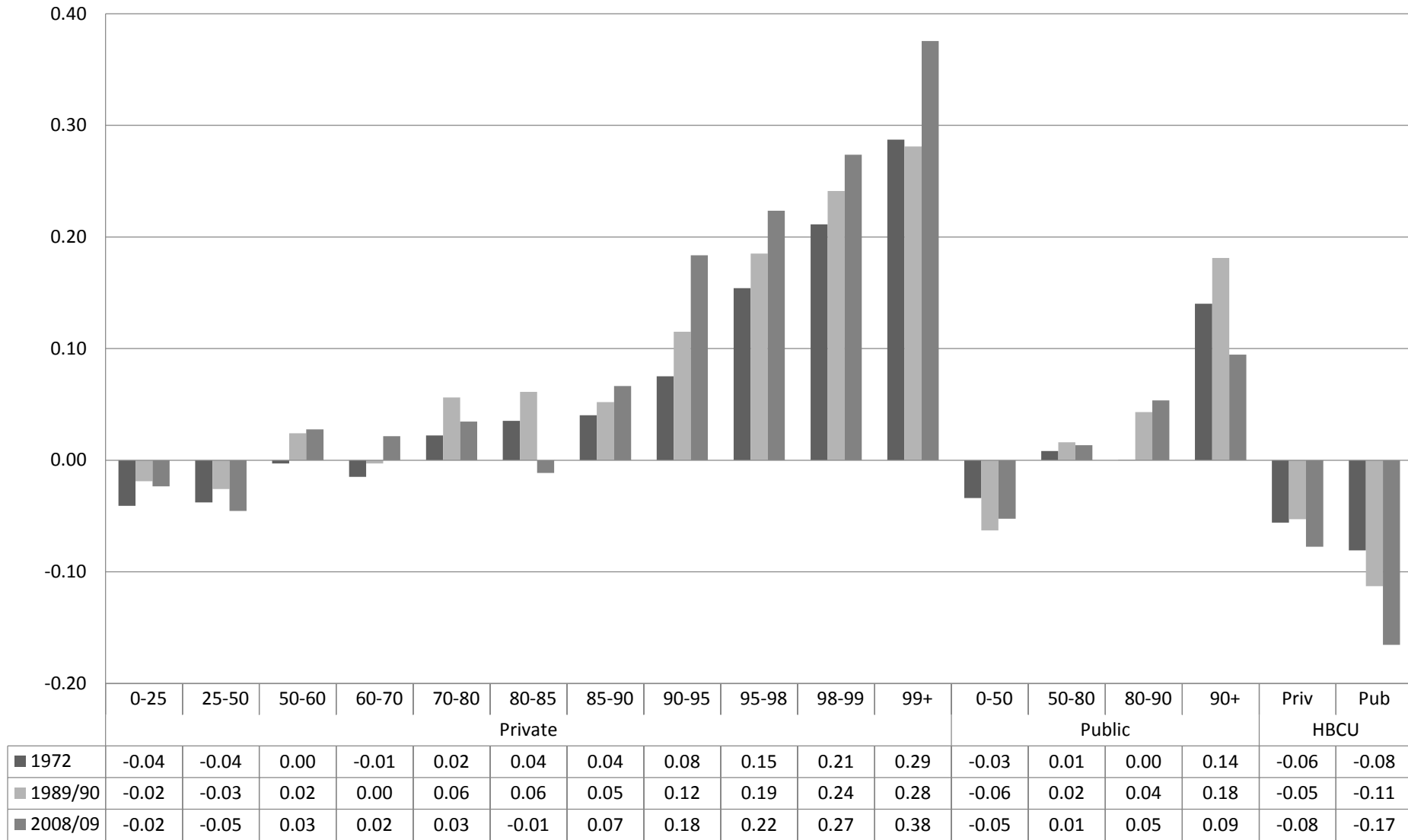
High School Grades of Entering Students, by College Category, 1972





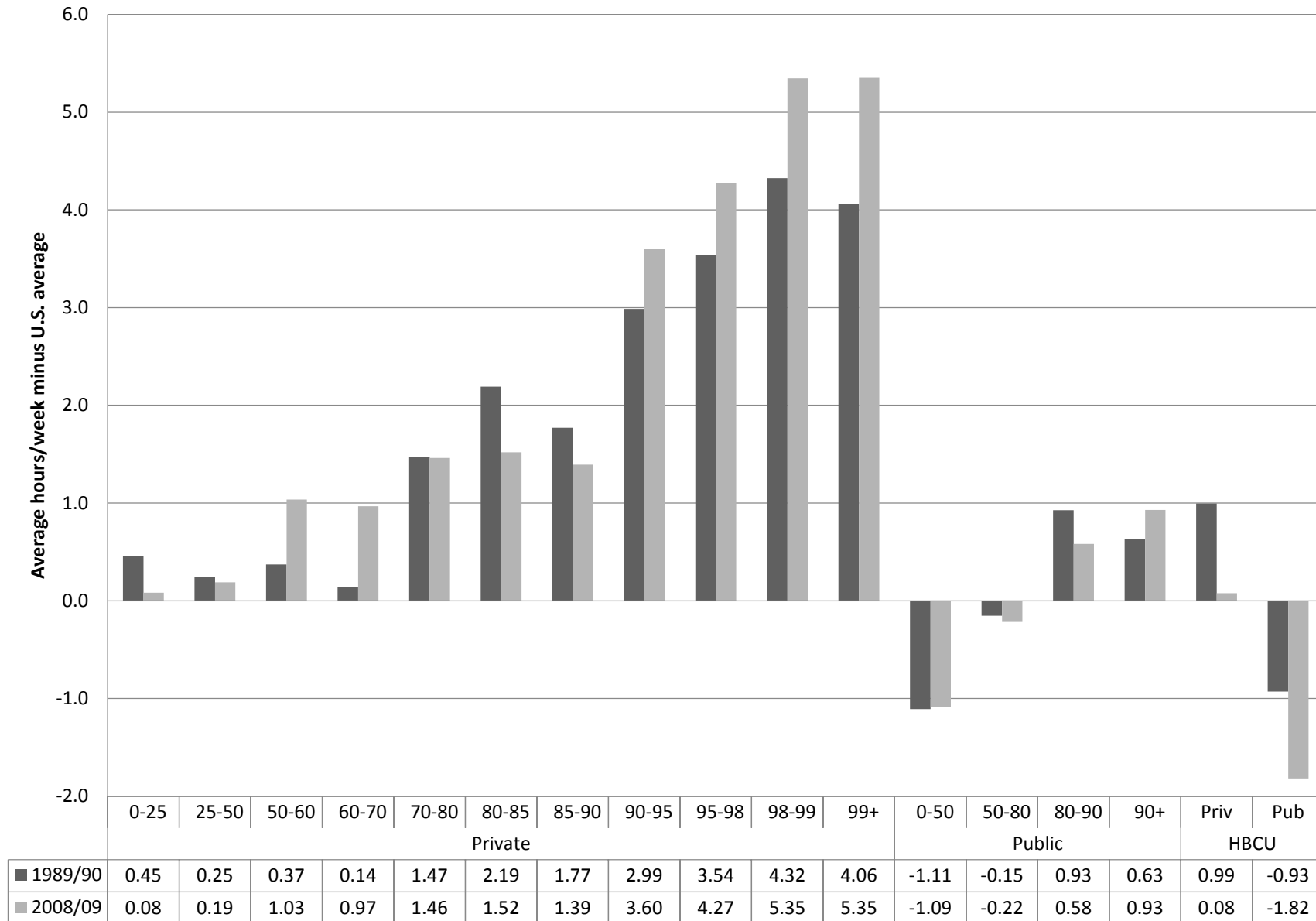
Share of First-Year Students with A or A+ Grade Average in H.S.

Percentage A or A+ for college group minus U.S. average



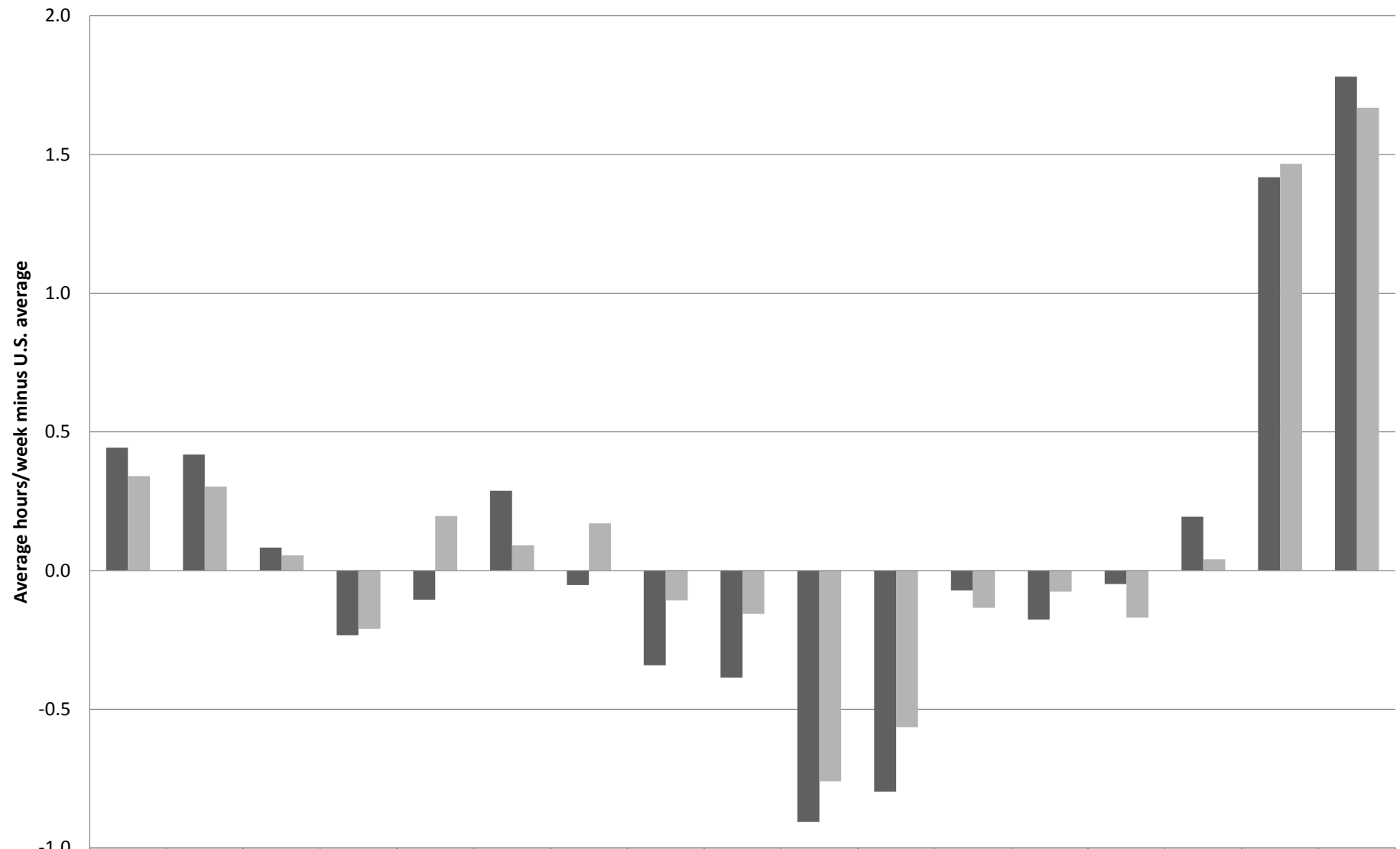


Hours per Week Studying (minus National Av.) as Senior in High School





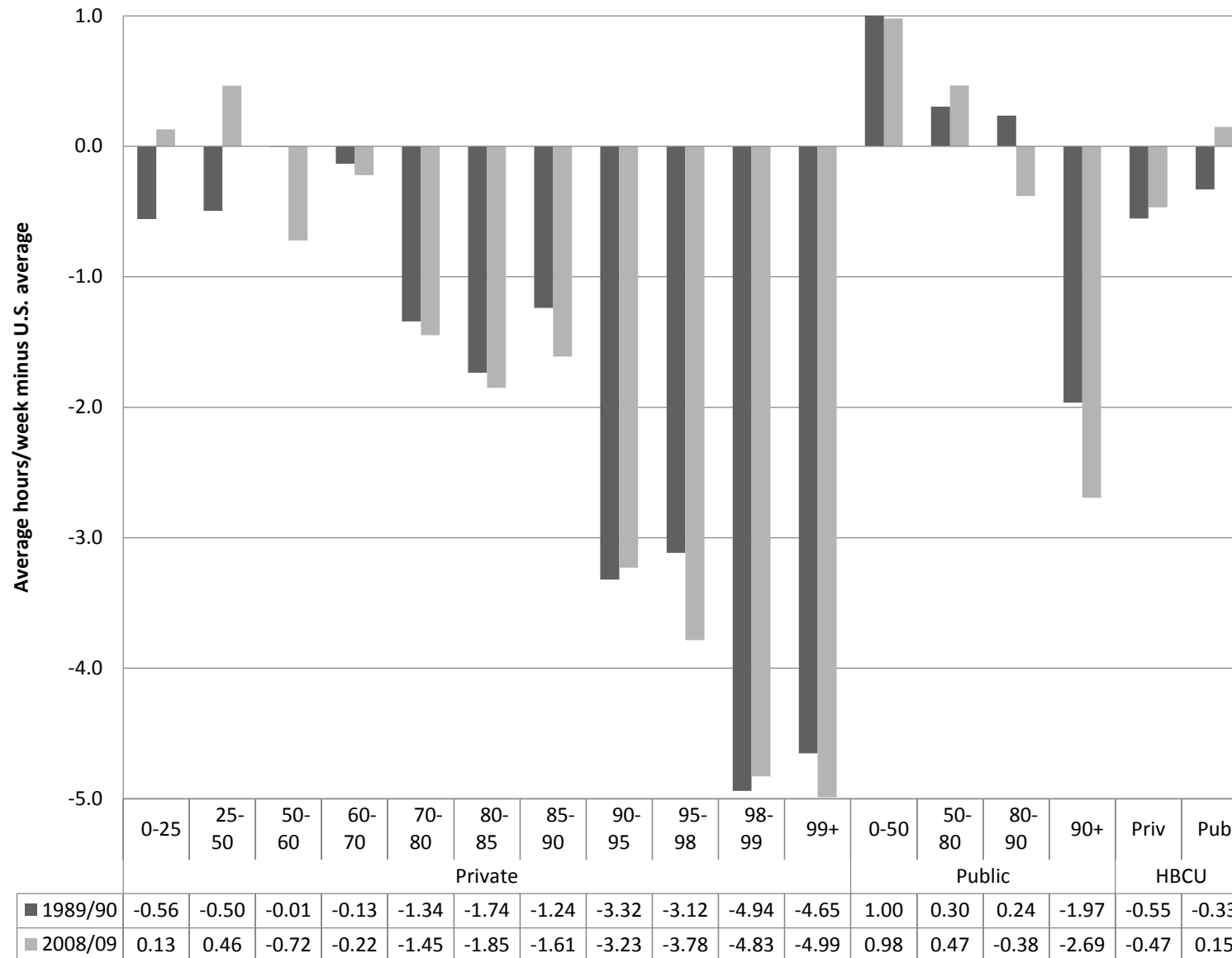
Hours per Week Watching TV (minus National Av.) as Senior in High School



	0-25	25-50	50-60	60-70	70-80	80-85	85-90	90-95	95-98	98-99	99+	0-50	50-80	80-90	90+	Priv	Pub
	Private											Public				HBCU	
■ 1989/90	0.44	0.42	0.08	-0.23	-0.11	0.29	-0.05	-0.34	-0.39	-0.91	-0.80	-0.07	-0.18	-0.05	0.19	1.42	1.78
■ 2008/09	0.34	0.30	0.05	-0.21	0.20	0.09	0.17	-0.11	-0.16	-0.76	-0.57	-0.13	-0.08	-0.17	0.04	1.47	1.67

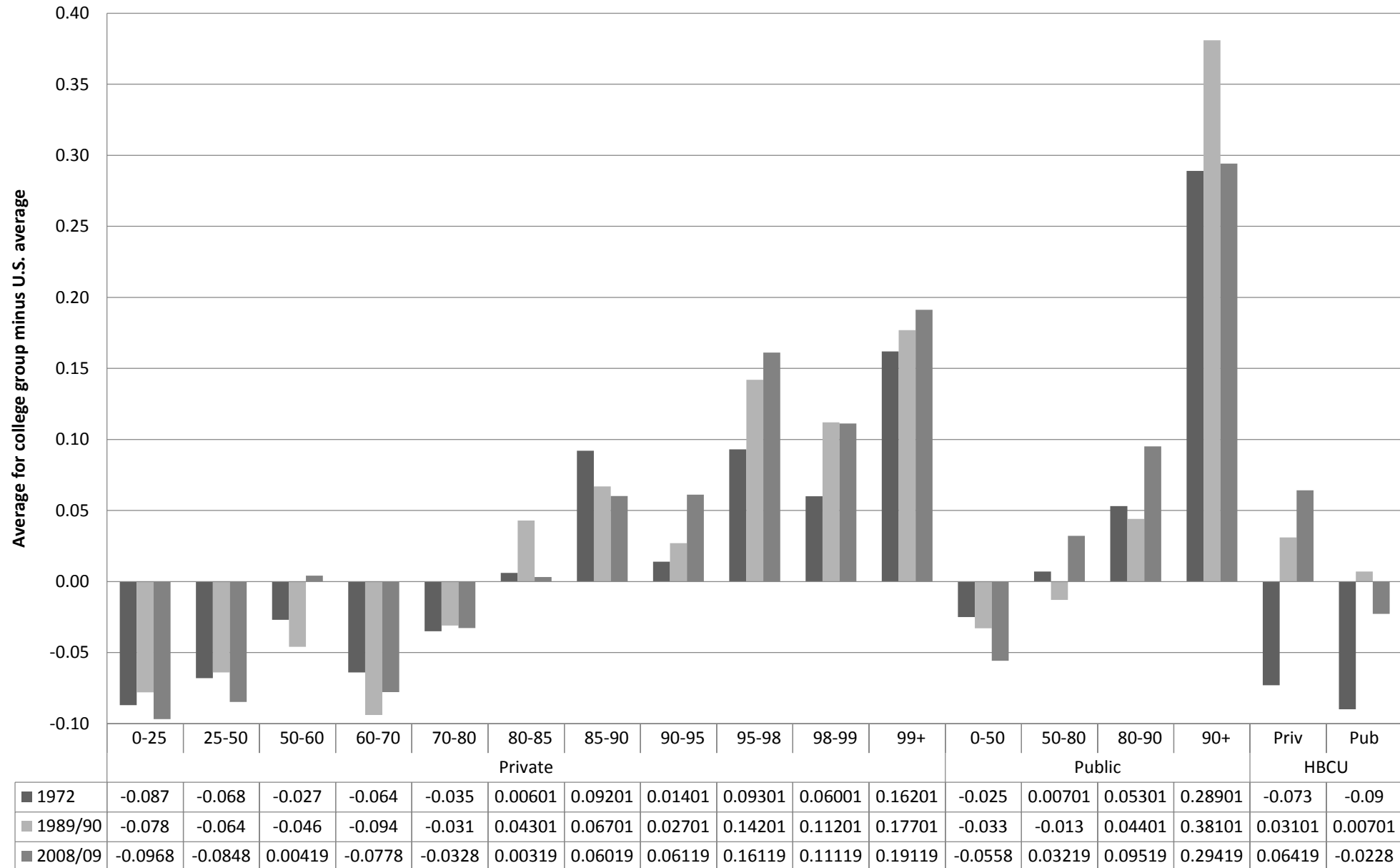


Hours per Week Working for Pay (minus National Av.) as Senior in High School





Share of First-Year Students Planning to Major in STEM Field, Relative to All First-Yr Students



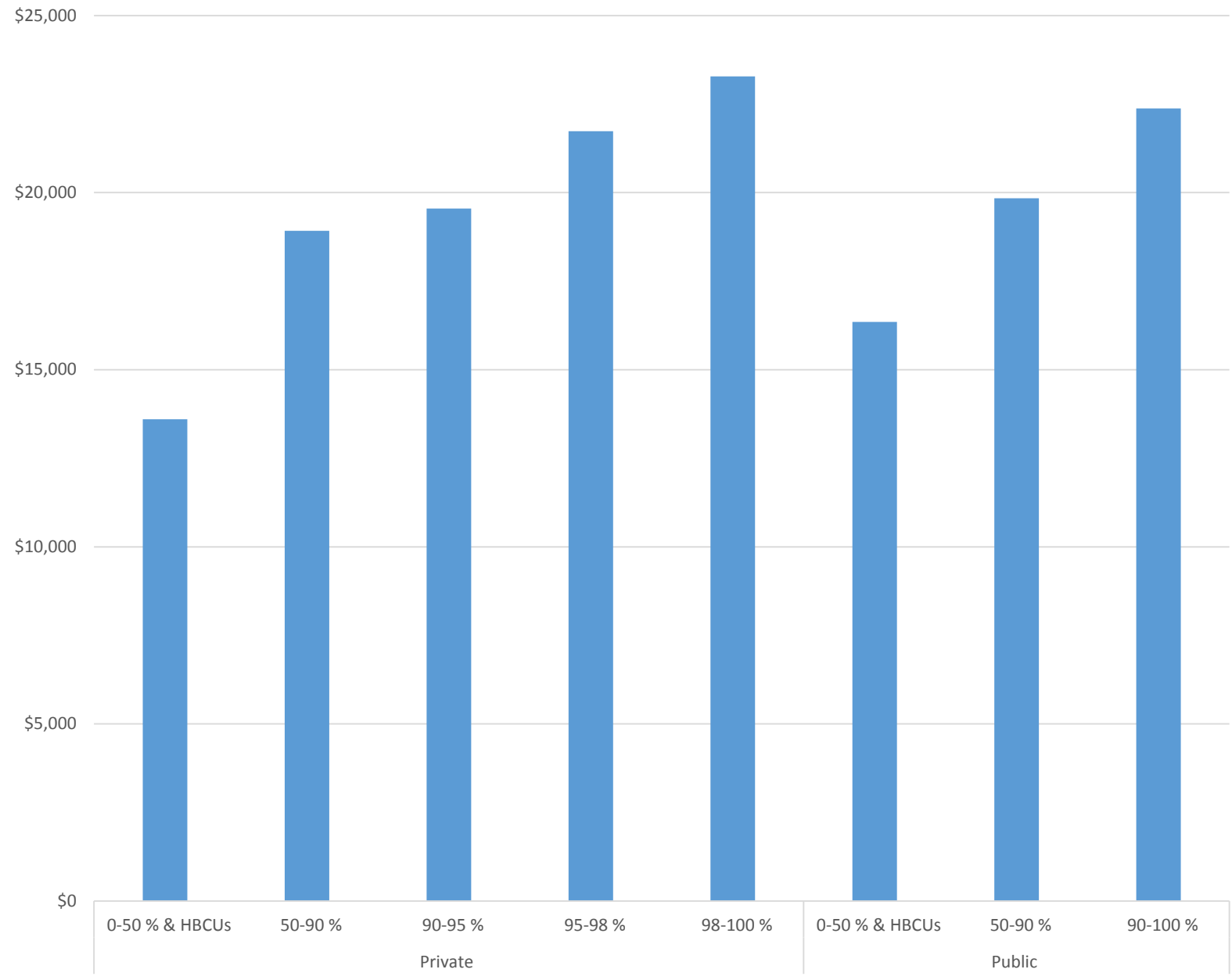


Resources



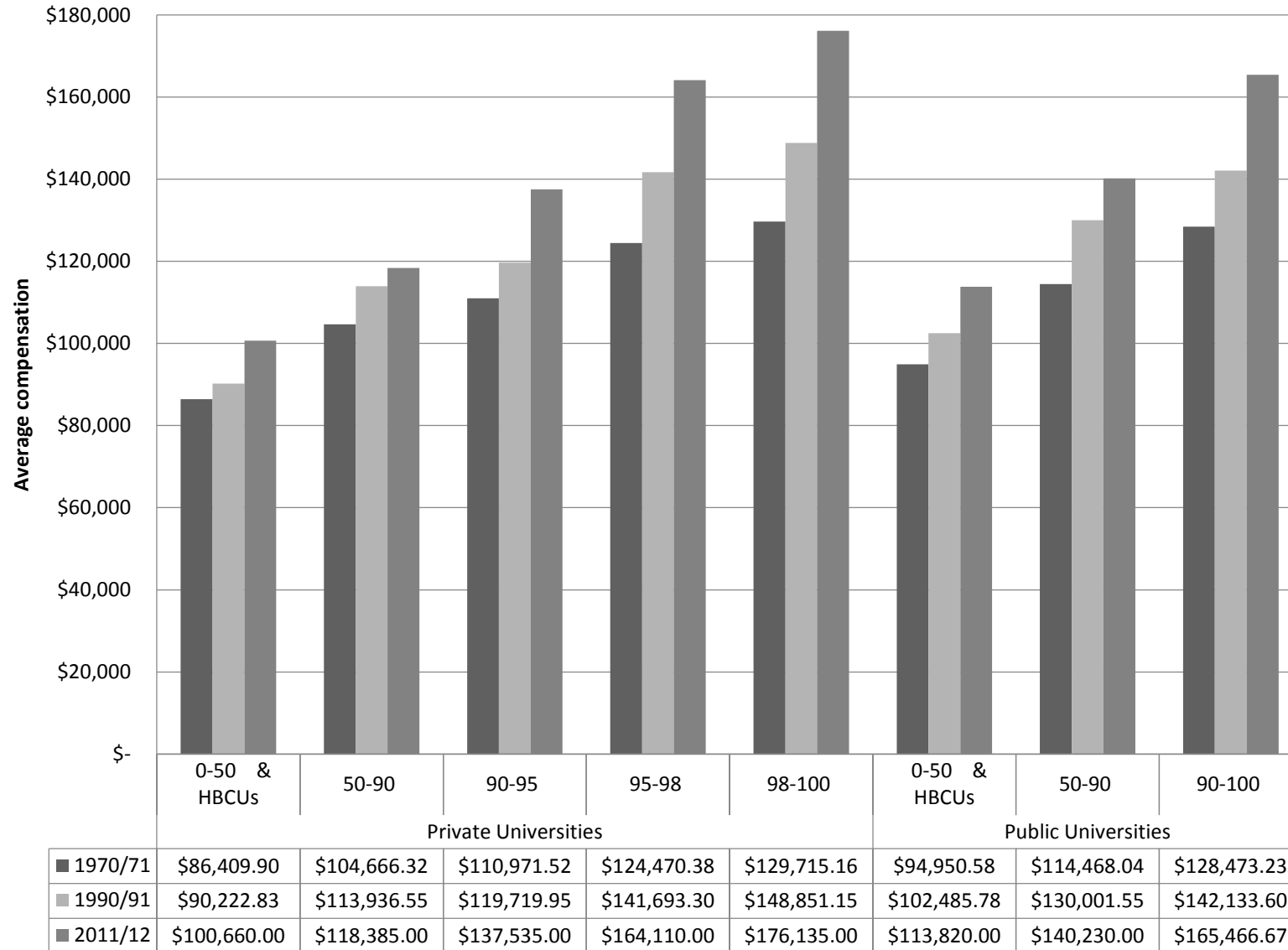


Average Compensation, Full Professors, 1970/71



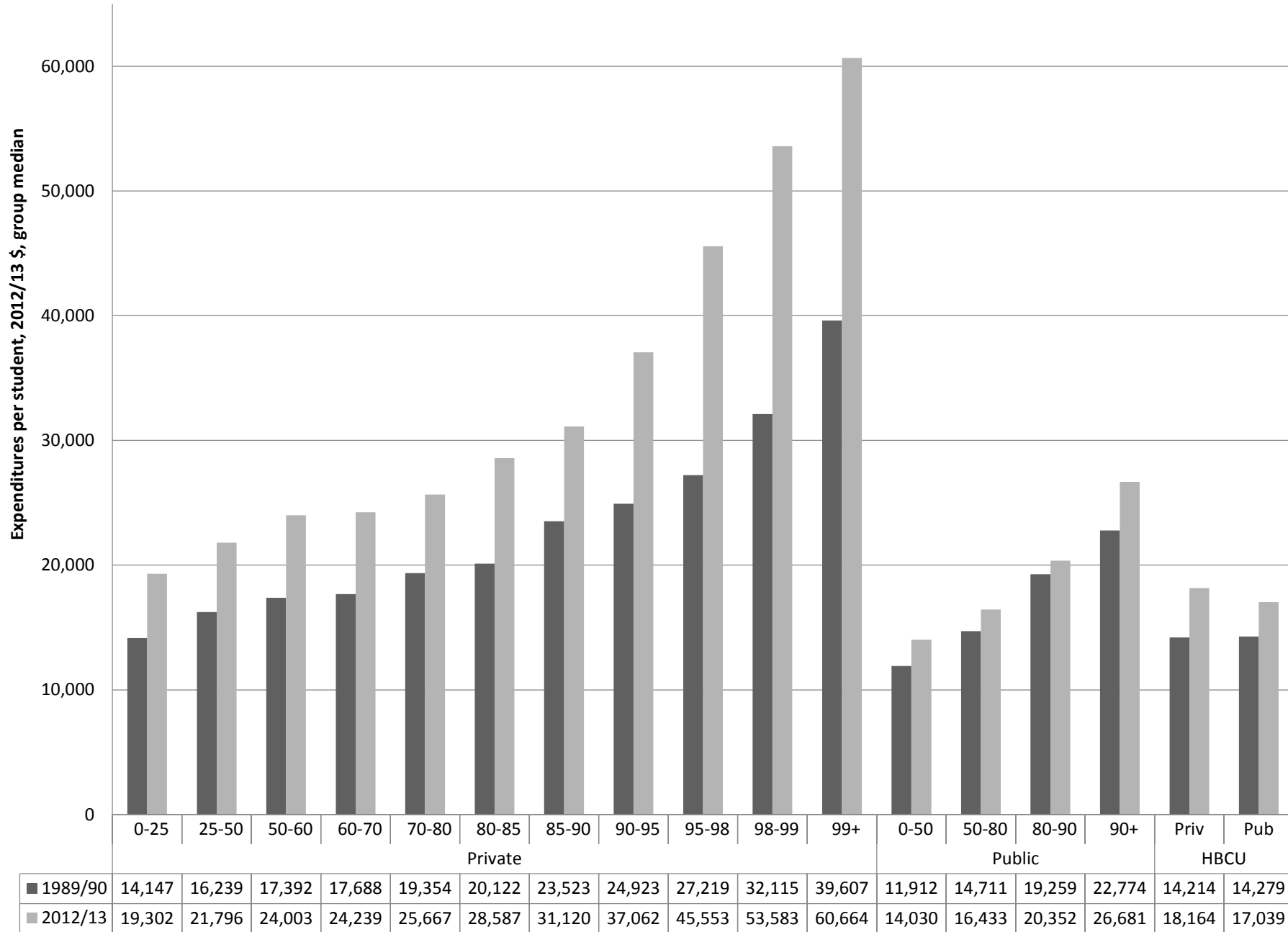


Av. Compensation, Full Professors, 8 Groups of Colleges



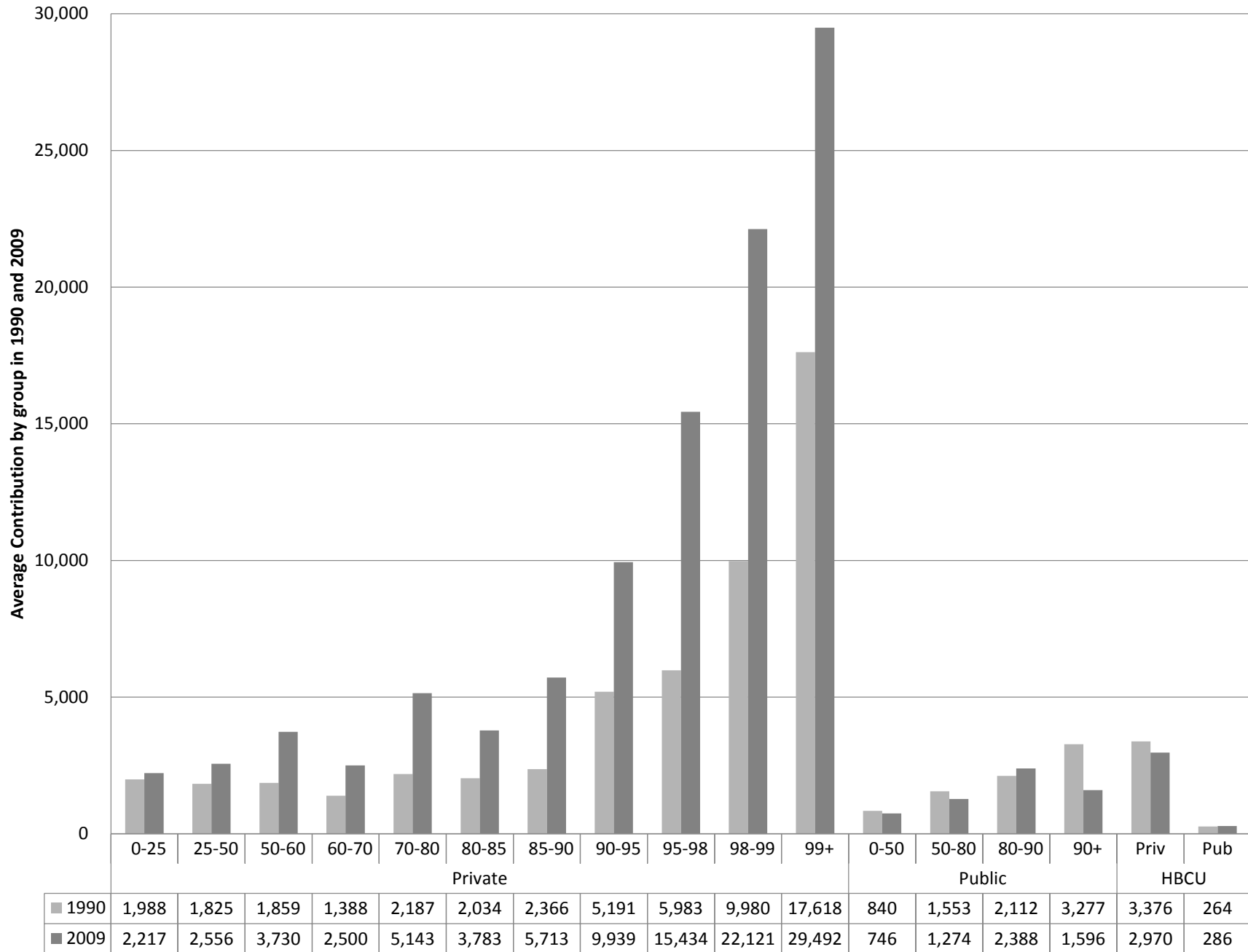


Expenditures per Student, 1989/90 and 2012/13



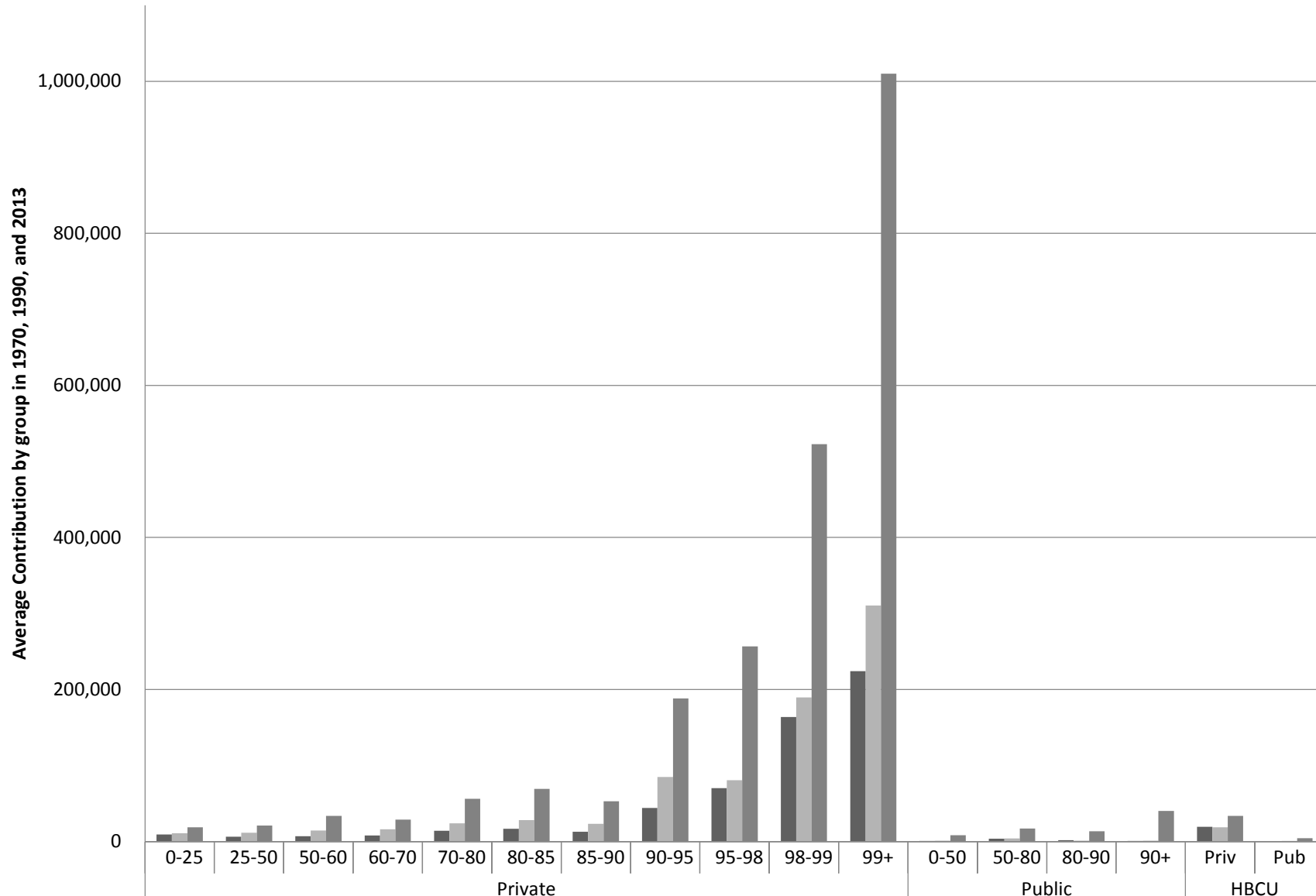


Donations per Student





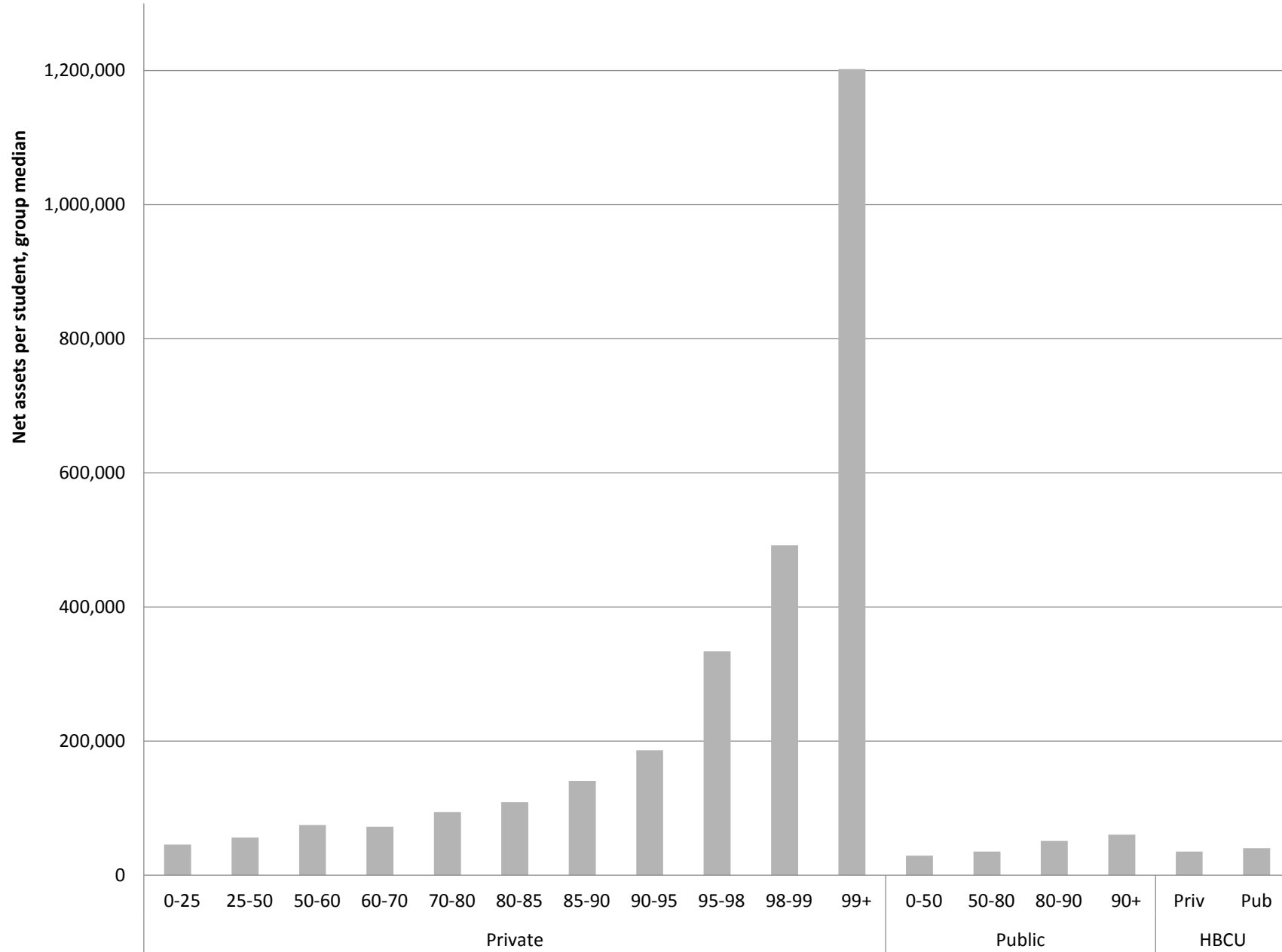
Endowment per Student



	Private											Public				HBCU	
■ 1970	9,171	6,332	7,001	8,061	14,233	16,944	12,819	44,093	70,286	163,96	224,03	943	3,808	1,662	908	19,534	559
■ 1990	10,811	11,674	14,515	16,229	24,115	28,111	23,425	84,828	80,756	189,73	310,59	1,238	4,127	1,287	1,135	18,677	790
■ 2013	18,745	21,194	33,852	29,004	56,403	69,299	52,920	188,24	256,61	522,62	1,010,	8,348	17,234	13,631	40,350	33,769	4,338



Net Assets per Student 2012/13



The logo for CALDER, featuring a purple square with white silhouettes of a family (two adults and two children) walking under a string of lights. Below the square, the word "CALDER" is written in white, bold, uppercase letters on a purple background.

Socioeconomic Status/Family Income



Concern about the Rich-Poor Gap

“America’s Top Colleges Have a Rich-Kid Problem,” *Atlantic Monthly*

“Generations Later, Poor are Still Rare at Elite Colleges,” *New York Times*

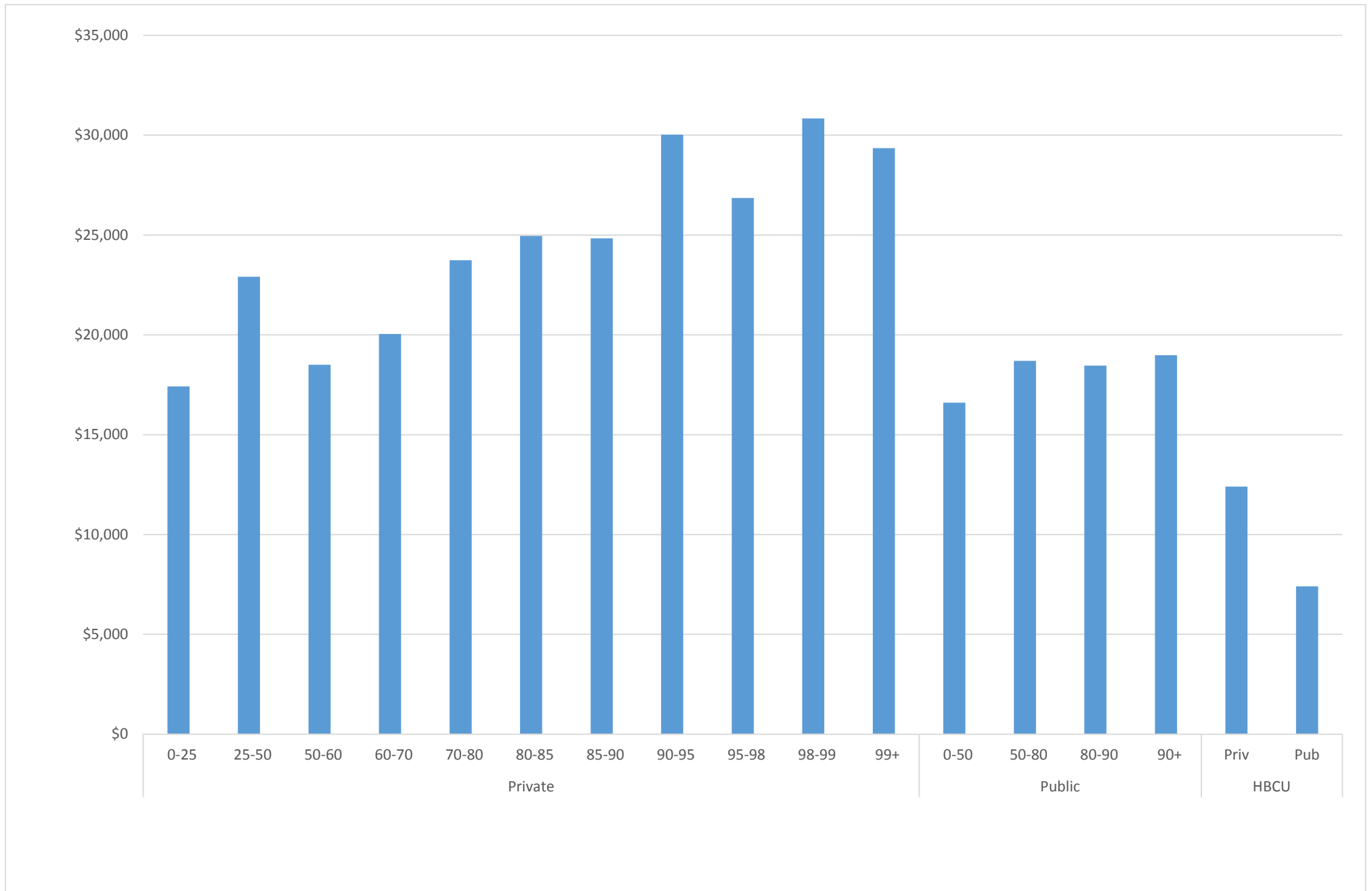
“The Rich-Poor Gap Widens for Colleges and Students, *Chronicle of Higher Education*

“A Bigger Affluence Gap Than Expected at Elite Colleges,” *New York Times*

“As Wealthy Fill Top Colleges, New Efforts to Level the Playing Field,” *New York Times*

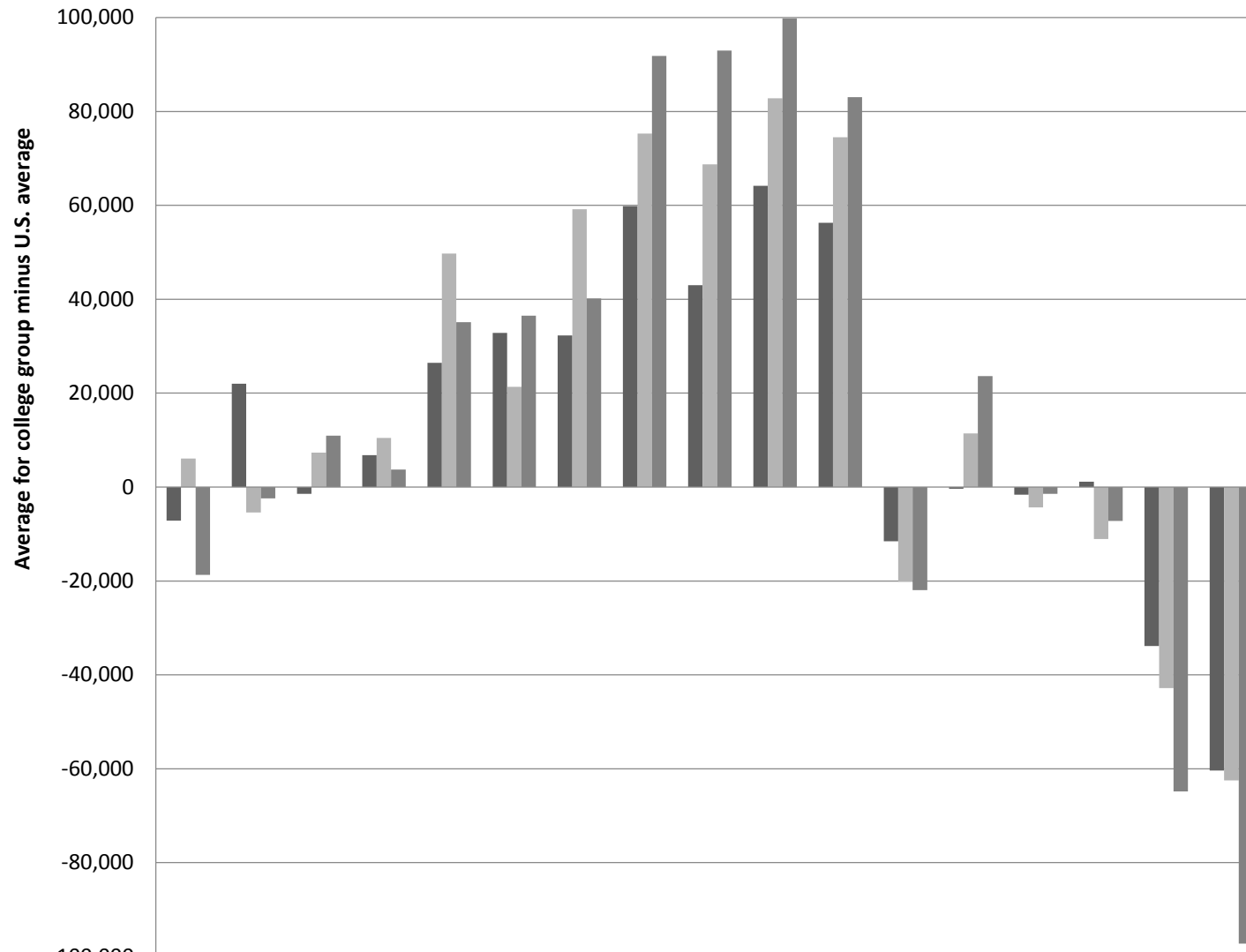


Average Family Income, by College Category, 1972





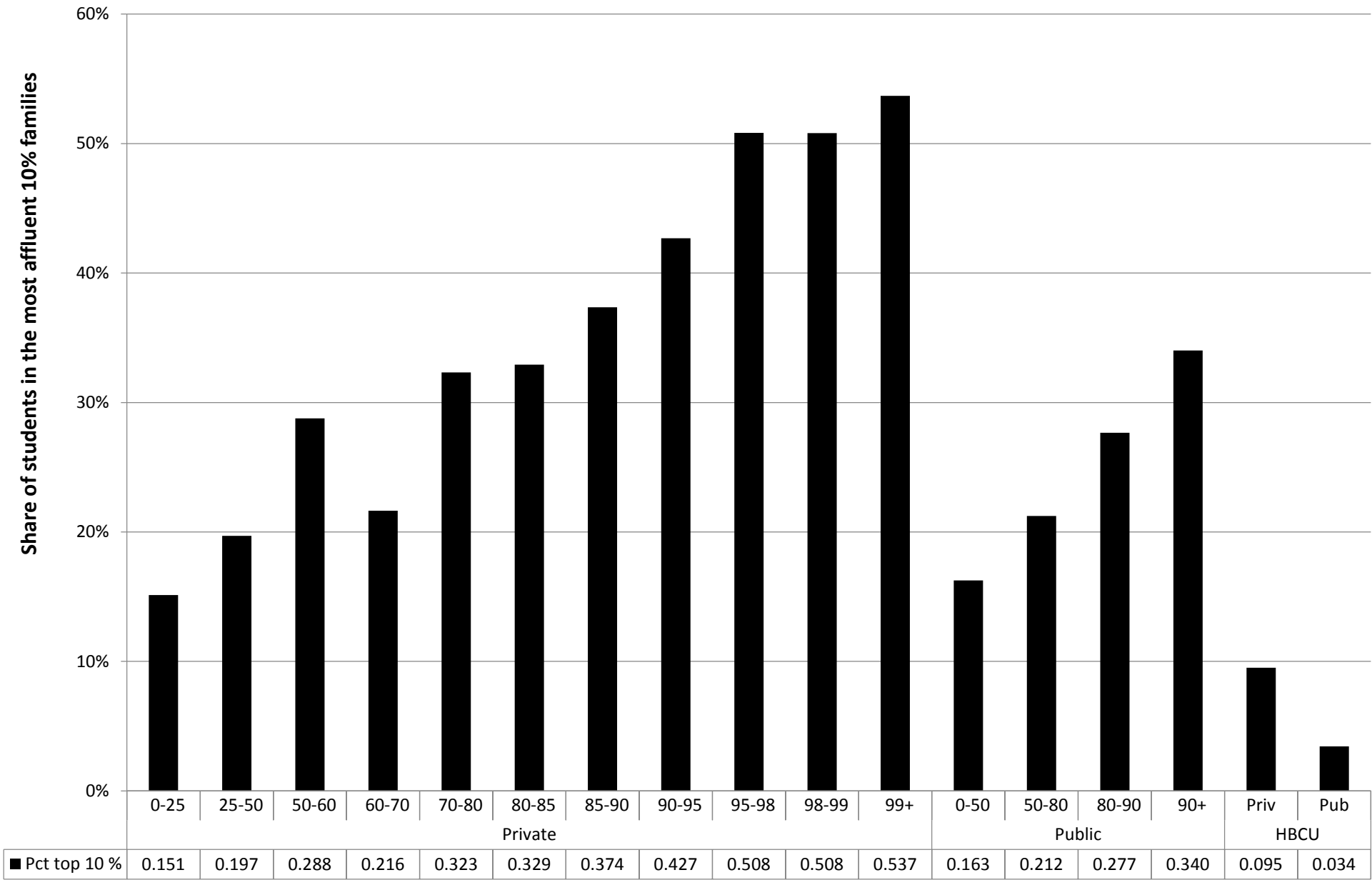
Students' Av. Family Income, by Category, Minus Nat. Mean



	0-25	25-50	50-60	60-70	70-80	80-85	85-90	90-95	95-98	98-99	99+	0-50	50-80	80-90	90+	Priv	Pub
	Private											Public				HBCU	
■ 1,972	-7,17	22,03	-1,43	6,790	26,43	32,86	32,27	59,85	42,98	64,16	56,28	-11,5	-360	-1,64	1,114	-33,8	-60,4
■ 1989/90	6,051	-5,42	7,319	10,47	49,71	21,32	59,20	75,29	68,71	82,79	74,51	-20,1	11,44	-4,31	-11,0	-42,8	-62,5
■ 2008/09	-18,7	-2,40	10,94	3,717	35,14	36,50	40,17	91,79	92,95	99,80	83,06	-21,9	23,64	-1,47	-7,24	-64,8	-97,2

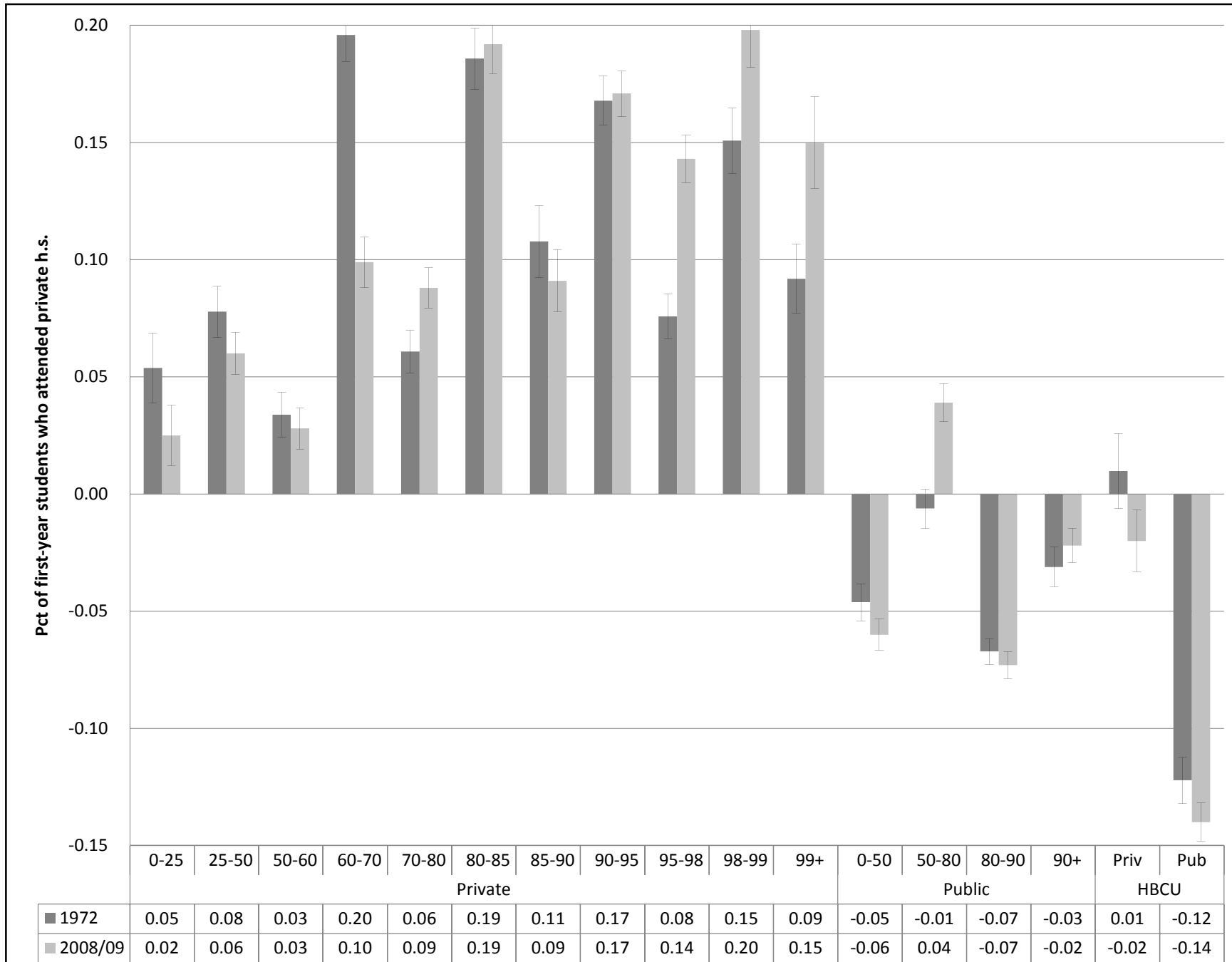


Share of Students from Most Affluent 10% of Families; Chetty et al.





Attended a Private H.S., 1972 and 2008/09





Pct. of First-Year Students from top 10% Families in Elite Colleges
Freshman Survey Sample

				Survey wave		
				1972	1989/90	2008/09
Of those enrolled, percentage from richest 10% of families						
18 highly selective private colleges				19.8	20.4	20.6
56 selective private and public colleges				15.2	15.3	15.6

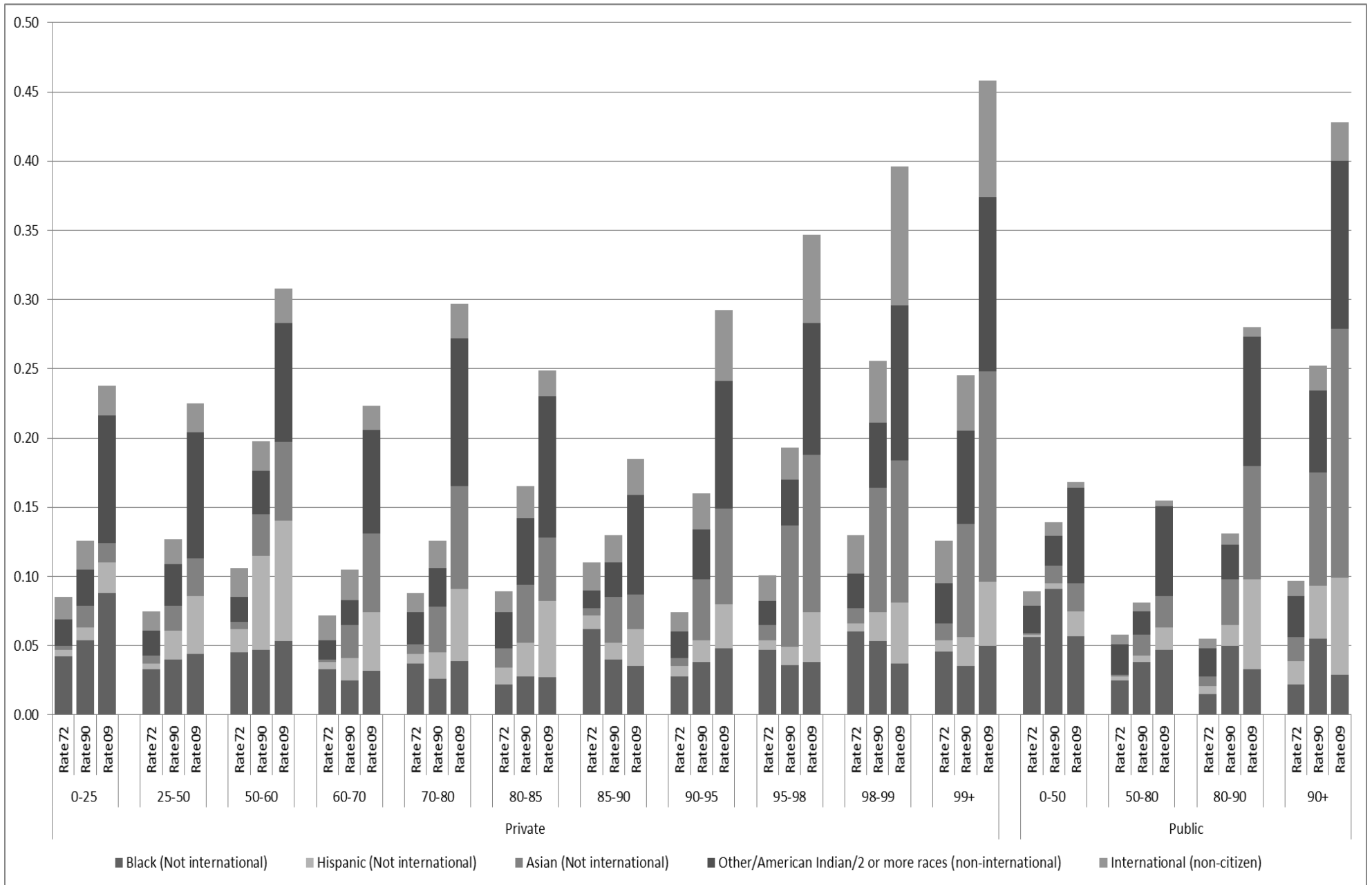


Diversity



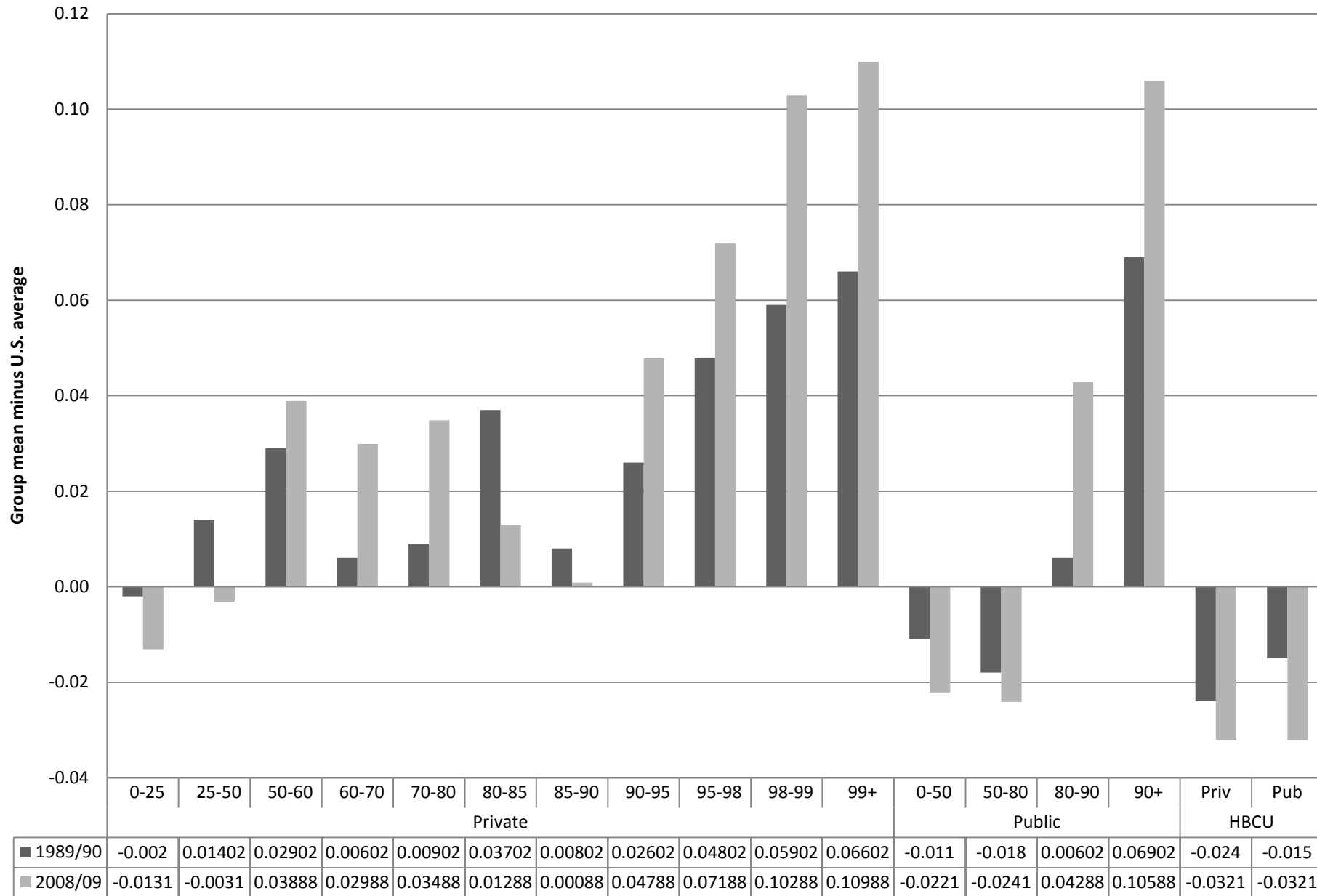


Changing racial, ethnic, national composition



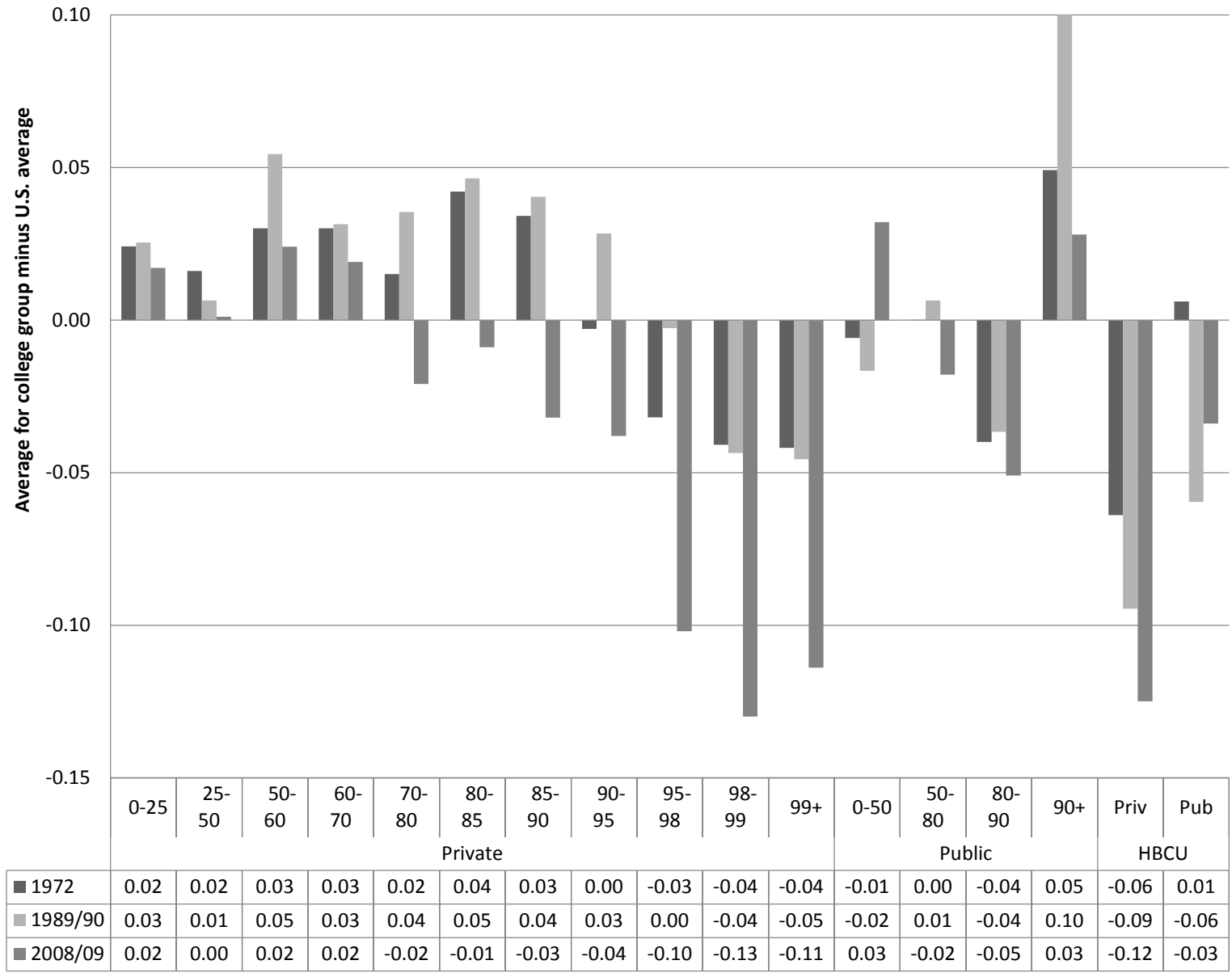


English not their native language: first-year students





Political leanings by college category: pact conservative or far right





Political view is conservative or far right, private colleges in 25-50 percentile

